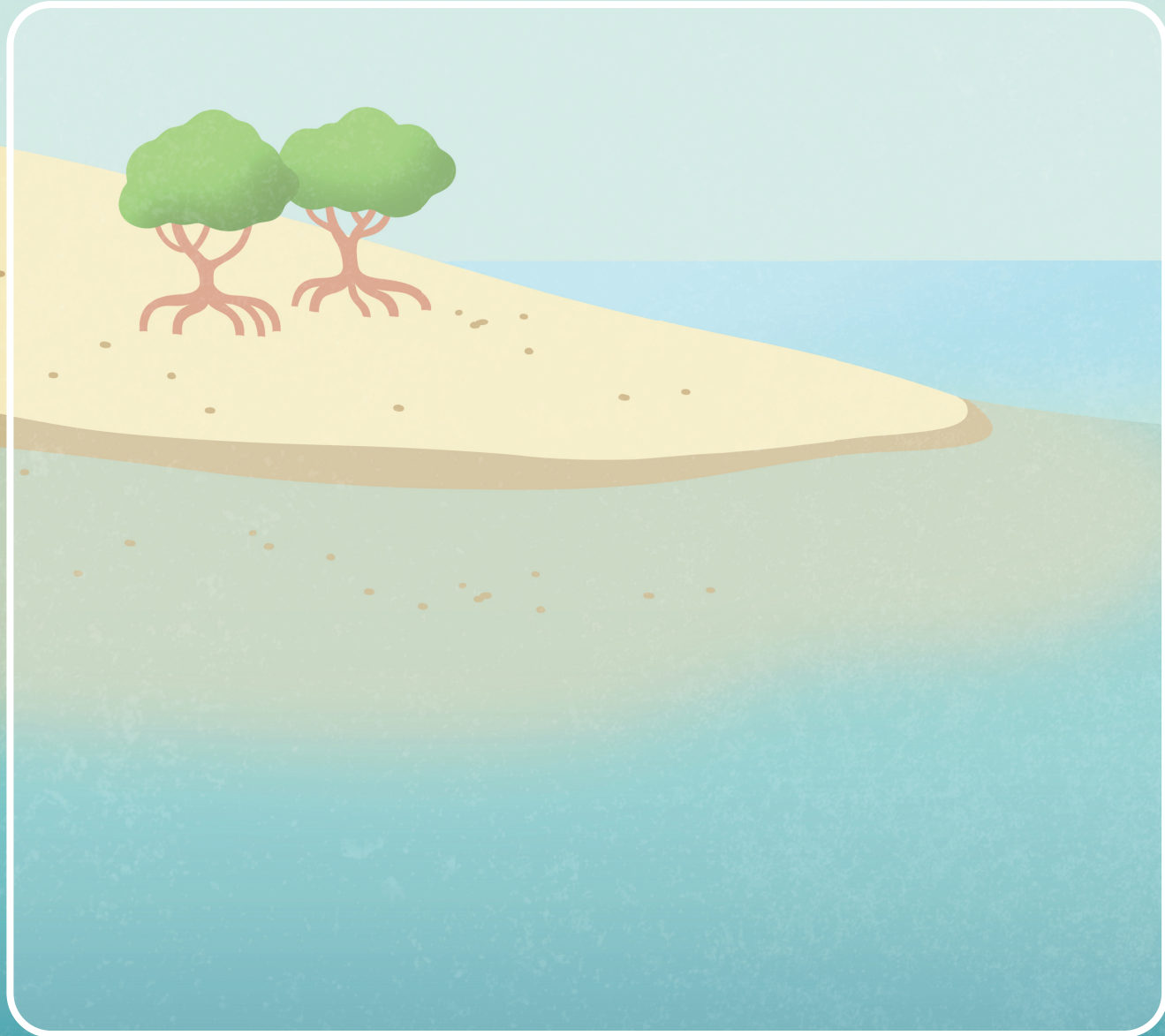


現在你已經了解什麼是食物網!請畫出一個連接海洋和陸地的食物網。

提示:我們的雀鳥和蟹朋友可以幫助你!

Now you understand what is a food web! Please draw a food web which connects the Ocean and the Land.

Hints: You can try with our feather friends and crab!



2025 香港海事博物館有限公司

版權所有 不得翻印

出版 | 香港海事博物館

作者 | 伍家恩、施駿龍、梁芊苻

設計 | 青花工作室

2025 Hong Kong Maritime Museum Limited

All Rights Reserved

Publisher | Hong Kong Maritime Museum Limited

Author | Connie Ng, Gomen See, Jocelyn Leung

Design | Seika Studio

想知道答案或更多海洋資訊，

請瀏覽

For answers and more info,
please visit



太古海洋探知館網頁
Swire Marine Discovery Centre website

前往下個展區
NEXT ZONE

海洋危機
UNDER THREAT



展區 ZONE

我們的海洋 OUR OCEAN



HONG KONG
maritime
museum
香港海事博物館

綠海龜媽媽米亞 和她的海洋朋友

MOTHER GREEN TURTLE MIA
AND HER OCEAN FRIENDS



香港是超過5,000種海洋生物的家。你知道牠們是如何互動和互相依賴嗎？

營養關係是其中一個例子，指生物之間的食性關係，例如綠海龜進食海草。當這些關係逐一結合形成一連串的關係時，便會形成**食物鏈**。而食物鏈互相結合後便形成複雜的**食物網**。

Hong Kong is home to more than 5,000 species of marine wildlife. Do you know how they interact with and rely on each other?

One example is trophic relationships which refer to the feeding relationships among living organisms, like green turtles feed on seagrasses. When these relationships connect one by one, it will form a chain of relationships which we call **FOOD CHAIN**. Adding food chains together forms a complicated web, **FOOD WEB**.



在食物鏈或食物網中，每種生物作為生產者或消費者，扮演一個或多個角色。牠們在不同的食物鏈或網中扮演的角色也可能不同。

Within a food chain or food web, each organism occupies one or more trophic level(s) as producer or consumer. Their roles can be different in different food chains or webs.



1 生產者 PRODUCERS

食物鏈最底層的生物，它們能夠合成需要的食物。例如利用陽光生產食物的植物和藻類就是生產者。

Organisms in the first trophic level that can synthesise their own food, such as plants and algae which use sunlight to produce food. They serve as the foundation of food chains.

2 初級消費者 PRIMARY CONSUMERS

食物鏈第二層的生物，牠們以生產者為食物。部分初級消費者被稱為食草動物。

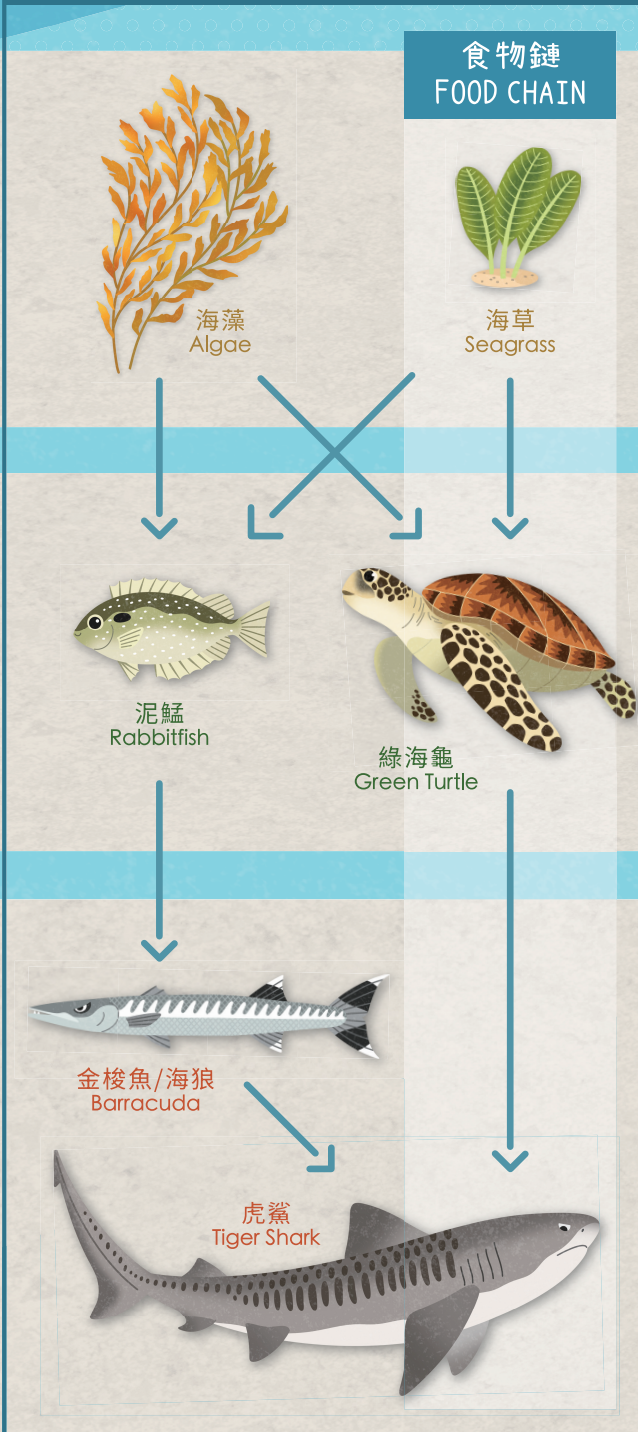
Organisms in the second trophic level which eat producers. Some of them are called herbivores (i.e. plant-eater).

3 次級和三級消費者 SECONDARY & TERTIARY CONSUMERS

次級消費者是食物鏈第三層的生物，牠們以初級消費者為食物，再上一層的三級消費者則以次級消費者為食物，依此類推。消費者可能依賴多種食物來源並扮演不同角色。牠們可以是肉食動物或雜食動物(吃動物和植物)。

Secondary consumers are organisms in the third trophic level which feed on primary consumers, while tertiary consumers feed on secondary consumers, and so forth. Consumers may rely on multiple food sources and occupy several trophic levels. They are either carnivores (i.e. meat-eater) or omnivores (i.e. plant- & meat-eater).

食物網 FOOD WEB



食物鏈 FOOD CHAIN



海藻 Algae



海草 Seagrass



泥鯚 Rabbitfish



綠海龜 Green Turtle



金梭魚/海狼 Barracuda



虎鯊 Tiger Shark

食物網小遊戲 FOOD WEB GAME



請畫出箭咀來連接食物網。

記住箭咀是由獵物指向捕食者。

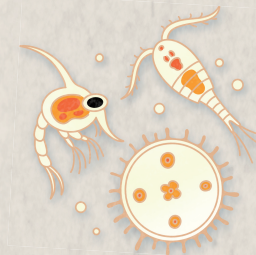
Please draw arrows to connect the food web. Remember the arrowhead should be pointing at the animals which feed on the other.

地點 LOCATION 香港水域 HONG KONG WATERS



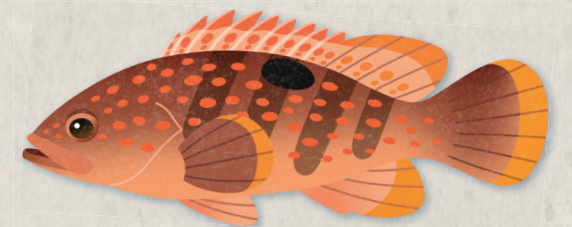
人類 HUMAN

頂級消費者。 The top consumer.



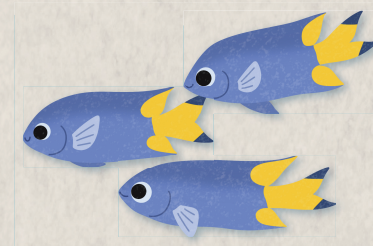
浮游動物 ZOOPLANKTON

以浮游植物等較小生物為食物的微小生物。 Tiny organisms which feed on smaller organisms like phytoplankton.



紅斑 HONG KONG GROUPER

一種肉食動物，以較小的魚類、螃蟹和其他動物為食物。 A predator which eat smaller fishes, crabs and other creatures.



黃尾石裂 CHINESE DEMOISELLE

香港常見的小型魚類，以浮游生物為食物。 A common small fish in Hong Kong which feeds on plankton.



浮游植物 PHYTOPLANKTON

利用陽光製造食物的微小生物。 Tiny organisms which use sunlight to make their own food.



綠海龜媽媽米亞以海草和藻類為食。那她在食物鏈中屬於哪個角色？
Mother Green Turtle Mia feeds on sea grass and algae.
Which role in a trophic level does she belong to?

答案 ANSWER



你能在「我們的海洋」展區中找到以上哪些生物？
Can you find any of these marine life in the "Our Ocean" area?
What are they?

答案 ANSWER